

About **MetalQuest Mining**

- A Canadian mineral development and exploration company building a portfolio of large-scale, strategic critical mineral assets.
- MQM's flagship asset is the **100%-owned Lac Otehluk Iron Ore Project** in Quebec's Labrador Trough, supported by extensive historic drilling and engineering work, including a historic **2015 Feasibility Study** and approximately **\$120 million** in historic project expenditures. MQM has expanded its Québec footprint through the **100%-owned Superior Iron Project**, which **adjoins Lac Otehluk** and increases MQM's regional land position in the Labrador Trough.
- In Ontario, MQM has added the **ROF-1 Project and Fishhook Polymetallic Project**— district-scale critical-minerals land packages in the **Ring of Fire** region—advancing a district scale critical minerals platform as well as the pending acquisition of a 100% interest in the **West Cameron Gold Project** following completed due diligence and TSXV approval.
- MQM also holds **1.45 million shares and 2.5 million warrants of Canadian Copper Inc. (CCI)** and **two NSR royalties totaling 1%** on the **Murray Brook Project** in New Brunswick.

KEY FINANCIALS (CAD – May 2026)

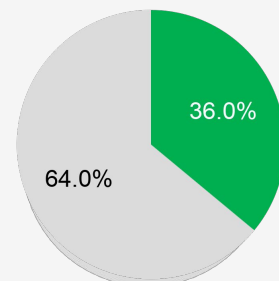
Share Price	\$0.3
Issued & Outstanding	45.5M
Options	4.575M
Market Cap	~\$11M

MANAGEMENT & DIRECTORS

Harry Barr	Chairman & CEO
Robert Guanzon	Chief Financial Officer
Charlotte Brown	Corporate Secretary
Gary Moore	Director
Gordon Chunnnett	Director
Ali Alizadeh	Director
Max Kazcmer	Exploration Manager

SHAREHOLDERS

- Management
 - Retail (~2000)
- *Values approximated



MetalQuestMining.com



- ★ Lac Otehluk Iron Ore Project, Labrador Trough, Quebec – Development Stage
Superior Iron Project, Labrador Trough, Quebec – Exploration Stage
- ★ Ring of Fire, Critical Minerals District, Ontario – Project Acquisition and Exploration Stage
District Potential 3x Sudbury
- ★ Royalties on Murray Brook VMS Deposit, Bathurst Mining Camp, New Brunswick. 1.45 million shares and 2.5 million warrants of Canadian Copper Inc.
- ★ Recently acquired West Cameron Gold in Kenora District. Entry into new Gold Division – Project Acquisition and Exploration Stage



Join our list

ONE OF THE LARGEST IRON ORE PROJECTS IN THE WORLD, LOCATED IN QUEBEC'S LABRADOR TROUGH

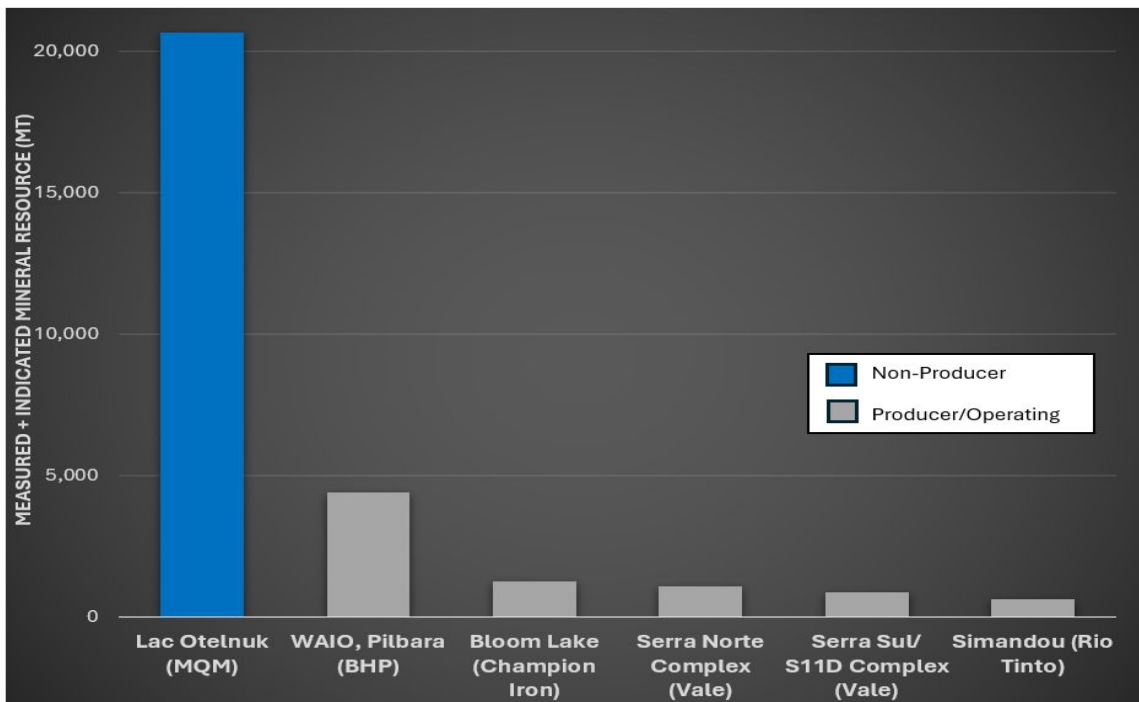
- MQM owns 100% of 306 claims in the block shown on right
- **Historical +20-billion-ton resource**
- +\$120 million has been spent on the Project, including a Feasibility Study done in 2015 and several resource calculations.
- Located in Nunavik, Northern Quebec, 165 km by air from Schefferville
- **Historic NI 43-101 mineral resource statement and technical report, dated 31st October 2013.**
- **Canadian, Quebec and Newfoundland and Labrador Governments deemed Iron Ore a critical metal in 2024**
- **AtkinsRéalis 2026 Technical Gap Analysis Complete**

NEXT STEPS

- Complete Project due diligence and continue to update iron ore database.
- Continued participation with First Nation partners and local stakeholders.
- **Introduce the Project to potential iron focused Option/JV partners with the objective to fund further development.**

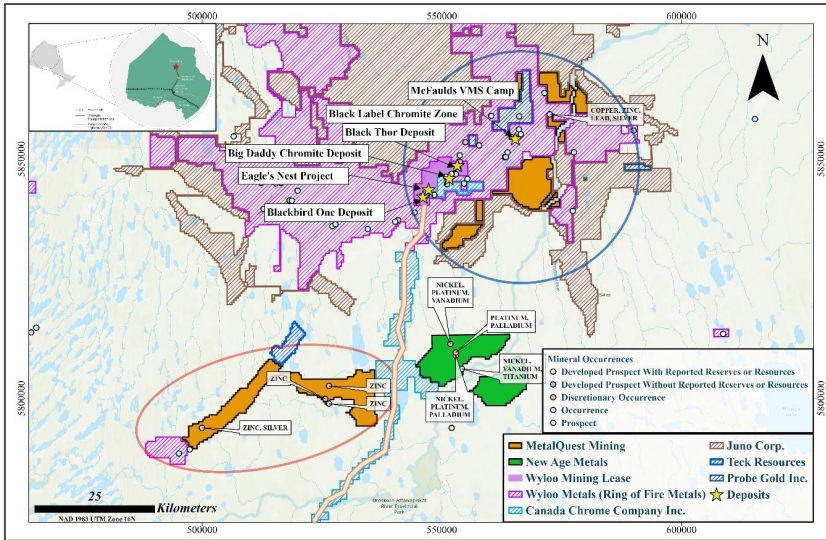


Lac Otehluk vs Other Regional and International Major Iron Ore Mines



Sources:
 1. Bloom Lake (Champion Iron): Operating Mine, Effective Date: 1st April 2023, NI 43-101 TR, <https://www.championiron.com/wp-content/uploads/2023/10/01a-technical-report-ni-43-101-2023-3813138-000000-01-ere-0002-c00.pdf>
 2. Simandou (Rio Tinto): Operating Mine, Effective Date: 6th December 2023, MRMR Resource Table, <https://www.riotinto.com/en/news/realisations/2023/simandou-iron-ore-project-update>
 3. Serra Su/ S11D Complex (Vale): Operating Mine, Effective Date: 31st December 2021, SEC SK-1300 TRS, https://minedocs.com/22/Serra_Su_TR_04082022.pdf
 4. Serra Norte Complex (Vale): Operating Mine, Effective Date: 31st December 2021, SEC SK-1300 TRS, https://minedocs.com/22/Serra_Norte_TR_04082022.pdf
 5. WAIO, Pilbara (BHP): Operating Mine, Effective Date: 30th June 2022, SEC SK-1300 TRS, <https://www.sec.gov/Archives/edgar/data/811809/000119312525185641/09416360x0602.pdf>
 6. Lac Otehluk (MetalQuest Mining): Non-producer, Effective Date: 25th March 2015, NI 43-101 FS, <https://ga.mines.gov.qc.ca/documents/examine/G469052/G469052.pdf>

Developments in the Ring of Fire One of the largest claim holders in the Ring of Fire. Newly acquired district scale critical metals Projects



Location map showing the Fishhook Polymetallic Project (outlined in red) and the previously acquired ROF-1 Projects (outlined in blue) within the Ring of Fire geological corridor, Northwestern Ontario.

- **District-Scale Strategy:** MQM is building an early-stage critical minerals platform in Ontario's Ring of Fire.
- **Large Land Position:** Secured ROF-1 (~20,800 ha) and Fishhook (~1,094 claims / ~22,000 ha).
- **Infrastructure Tailwinds:** Proposed SEZ + ~344 km all-season road corridor strengthens long-term access and development outlook.
- **High-Potential Targets:** Historic geophysics and limited drilling support potential for VMS-style polymetallic and Ni-Cu-PGE mineralization, with multiple follow-up targets identified

"ROF-1 is the foundation of a broader multi-project strategy we intend to execute over the coming months." — Harry Barr, Chairman & CEO

Developments in the Ring of Fire

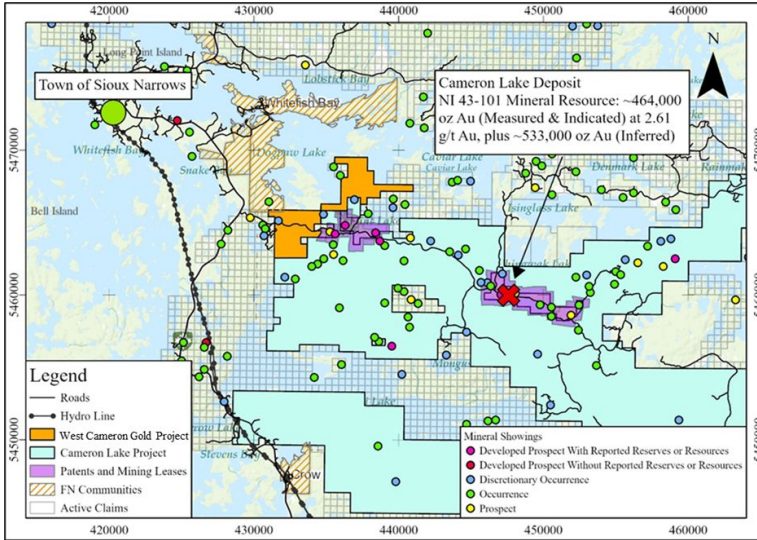
- MQM highlights **growing infrastructure and public/private investment interest** in the Ring of Fire
- Ontario has recently **signed agreements** with Marten Falls and Webequie First Nations, **with road-corridor constructions beginning in Summer 2026 and the targeted opening of the road in 2031**



*"With this **historic agreement**, our two governments are working together to protect Ontario and Canada by **removing unnecessary red tape**," Ford said. "This will create jobs, build a more competitive economy and help **unlock the enormous economic opportunity of the Ring of Fire.**"*
Premier Doug Ford of Ontario

MQM in Ontario's Kenora Mining District

West Cameron Gold Project



- Completed due diligence and received TSX.V approval to acquire a **100% interest in the West Cameron Gold Project**
- Located approximately 10 km south of Sioux Narrows and 60 km south of the City of Kenora, with **year-round access via Highway 71, logging roads, and established trails**
- Adjacent to the Cameron Lake claim group, which **hosts a significant advanced-stage gold deposit**
- Gold mineralization hosted in shear zones, quartz-carbonate veining, altered felsic intrusions, and structurally deformed rock packages
- **Historical surface sampling returned gold values up to 9.18 g/t Au**

Location of the West Cameron Gold Project near Sioux Narrows, Northwestern Ontario, adjacent to the Cameron Lake Property. First Mining's Cameron Lake Gold Deposit is located approximately 12 km from the project along an all-weather access road.

“The potential acquisition of West Cameron Gold Project would mark the formal entry into gold exploration and reflects our strategy of building a portfolio of technically strong exploration assets in premier Canadian mining jurisdictions. — Harry Barr, Chairman & CEO

Strategic Exposure to the Murray Brook Deposit

- MQM holds 1.45 million shares and 2.5 million warrants of Canadian Copper Inc. (CCI) and two NSR royalties totaling 1% on the Murray Brook Project in New Brunswick
- Canadian Copper Inc owns and is developing the Murray Brook Deposit, the largest undeveloped VMS deposit in New Brunswick.
- Regional Infrastructure Synergies with Nearby Mines. **Adjacent to the Caribou Mine complex.**

