

About MetalQuest Mining

- A Canadian mineral development and exploration company building a portfolio of large-scale, strategic critical mineral assets.
- MQM's flagship asset is the **100%-owned Lac Otnuk Iron Ore Project** in Quebec's Labrador Trough, supported by extensive historic drilling and engineering work, including a historic **2015 Feasibility Study** and approximately **\$120 million** in historic project expenditures. MQM has expanded its Québec footprint through the **100%-owned Superior Iron Project**, which **adjoins Lac Otnuk** and increases MQM's regional land position in the Labrador Trough.
- In Ontario, MQM has added the **ROF-1 Project**—a district-scale critical-minerals land package in the **Ring of Fire** region—positioned near key deposits and exploration trends.
- MQM also holds **shares and warrants of Canadian Copper Inc. (CCI)** and **two NSR royalties totaling 1%** on the **Murray Brook Project** in New Brunswick.

KEY FINANCIALS (CAD – January 2026)

Share Price	\$0.35
Issued & Outstanding	34.3M
Options	3.52M
Market Cap	~\$12M

MANAGEMENT & DIRECTORS

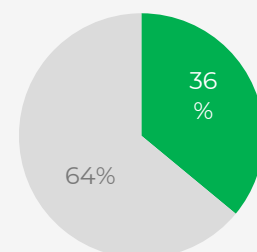
Harry Barr	Chairman & CEO
Robert Guanzon	Chief Financial Officer
Charlotte Brown	Corporate Secretary
Gary Moore	Director
Gordon Chunnett	Director
Faraz Rasheed	Business Development
Max Kaczmer	Exploration Manager

SHAREHOLDERS

● Management

● Retail (~2000)

*Values approximated



Lac Otnuk Iron Ore Project,
Labrador Trough, Quebec –
Development Stage

Superior Iron Project,
Labrador Trough, Quebec
– Exploration Stage

MetalQuestMining.com

Join our list



ONE OF THE LARGEST IRON ORE PROJECTS IN THE WORLD, LOCATED IN QUEBEC'S LABRADOR TROUGH

- MQM owns 100% of 306 claims in the block shown on right
- **Historical +20-billion-ton resource**
- +\$120 million has been spent on the Project, including a Feasibility Study done in 2015 and several resource calculations.
- Located in Nunavik, Northern Quebec, 165 km by air from Schefferville
- **Historic NI 43-101 mineral resource statement and technical report, dated 31st October 2013.**
- **Canadian, Quebec and Newfoundland and Labrador Governments deemed Iron Ore a critical metal in 2024**

NEXT STEPS

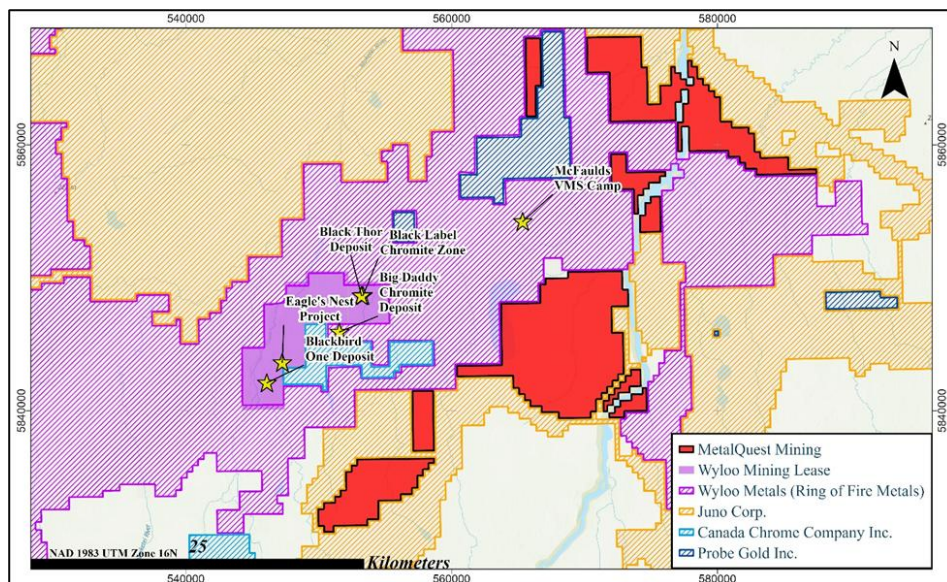
- Complete Project due diligence and continue to update iron ore database.
- **Acquire quotes from 3 International technical consultants 'in regard to completing a Preliminary Economic Assessment.**
- Continued participation with First Nation partners and local stakeholders.
- **Introduce the Project to potential iron focused Option/JV partners with the objective to fund further development.**



Lac Otehluk vs Other Regional and International Major Iron Ore Mines



Developments in the Ring of Fire One of the largest claim holders in the Ring of Fire. Newly acquired district scale critical metals Projects



- **Acquired ROF-1 (Ring of Fire Project 1)** in Northern Ontario
- **District-scale land package:** 1,034 claim cells (~20,800 ha / ~52,000 acres)
- Marks MQM's **first step in an expanding** Ring of Fire strategy
- Located **~10 km from Wyloo Metals'** Eagle's Nest (Ni-Cu-PGE) and near Black Thor (chromite) and the **McFaulds VMS trend**
- Positions MQM inside a corridor **hosting multiple advanced critical-mineral deposits**

Regional claim map highlighting landholders in the Ring of Fire and the location of MQM's ROF-1 Project.

"ROF-1 is the foundation of a broader multi-project strategy we intend to execute over the coming months." — **Harry Barr, Chairman & CEO**

Developments in the Ring of Fire

- MQM highlights **growing infrastructure and public/private investment interest** in the Ring of Fire
- Ontario has recently **signed agreements** with Marten Falls and Webequie First Nations, **with road-corridor progress cited and timelines targeting Spring 2026**



*"With this **historic agreement**, our two governments are working together to protect Ontario and Canada by **removing unnecessary red tape**," Ford said. "This will create jobs, build a more competitive economy and help **unlock the enormous economic opportunity of the Ring of Fire.**"*
Premier Doug Ford of Ontario



INTERNATIONAL METALS GROUP

Providing Financial and Mining Management Solution
for the Critical and Precious Metals Industries



An Iron Ore and Critical Metals
Exploration and Development Company



TSXV: **MQM**



OTCQB: **MQMIF**



FSE: **E7Q**

HIGH PURITY IRON

CRITICAL METALS

FOR MORE INFORMATION CONTACT US AT :



1-613-659-2773



info@mqmining.com

SIGN UP TO RECEIVE COMPANY UPDATES :



<https://MetalQuestMining.com/>

